



LEOPARD IMAGING INC

LI-OV10635-SER-xxxH Data Sheet

Key Features

- OmniVision OV10635 WXGA HDR Image Sensor
- Optical format: 1/2.7"
- Active pixels: 1280H x 800V
- Pixel size: 4.2 um x 4.2 um
- Support WDR(Wide Dynamic Range)
- Color camera, Rolling shutter
- Single Coax Cable transmit up to 12 meter PoC(Power over Cable)
- Lens: FOV H 57° / 112°
- 2 Boards are stacked
- Power consumption: Approx. 1W
- Weight: 18 g
- Part#:
 - LI-OV10635-SER-057H
 - LI-OV10635-SER-112H



Applications

- Machine Vision
- Medical Camera
- Automotive Camera
- Scientific Camera

Interface

- Part#: U.FL-R-SMT(10)
- Connector Style: U.FL
- Connector Type: Jack, Male Pin
- Fastening Type: Snap-On

BOM

#	Items	QTY
1	LI-USB30-OV10635 V1.2	1
2	LI-SERINT12V V1.0	1
3	Lens holder	1
4	M12 lens (M127B0618WR2 or M128B02820WM12R1)	1
5	u.FL to Fakra adapter cable	1



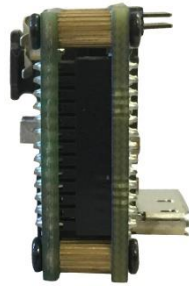
Leopard Imaging Inc.

48820 Kato Road, Suite 100B, Fremont, CA 94538, USA
 Phone: +1-408-263-0988
 Fax: +1-408-217-1960
 Email: sales@leopardimaging.com
 Website: www.leopardimaging.com

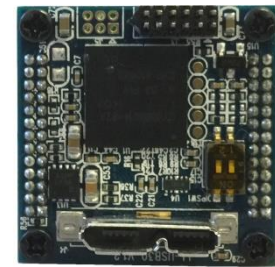
LI-TESTER-NV



Front View

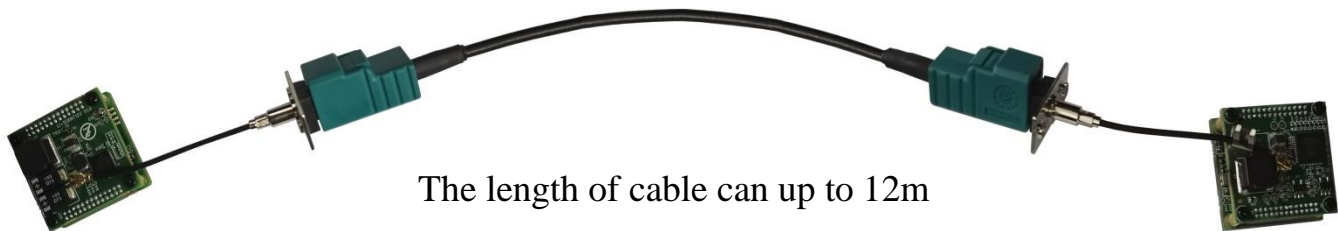


Side View



Back View

LI-OV10635-SER-xxxH can connect to USB 3.0 EVA module LI-TESTER-NV as a USB 3.0 camera. Part#: **LI-USB30-OV10635-SER-xxxH**



The length of cable can up to 12m

Key Features

- USB 3.0 Super Speed support
- YUV output without compression
- UVC compliance
- USB 2.0 backwards compatible
- Provide customization services
- USB +5VDC powered device
- Support WDR
- Default cable length: 3 meter
- Single Coax Cable transmit up to 12 meter PoC(Power over Cable)

SDK Supported

- Camera Tool Source Code in C#
- Capture & Display
- Register access



LI-USB30-OV10635-SER-xxxH SPEC

General Behavior		
Video Resolution @ Frame rate	1280 x 800 @ 30 fps, WDR 1280 x 720 @ 30 fps, WDR 640 x 480 @ 30 fps, WDR	
Sensitivity	TBD	
Dynamic range	10 bit	
Interface (Optical)		
IR cut filter (on lens)	Yes, 650nm IR cut filter	
Sensor specification	OmniVision OV10635 WXGA HDR Image Sensor	
Shutter	Rolling	
Format	1/2.7"	
Resolution	H:1280, V:800	
Pixel size	H:4.2 um, V: 4.2 um	
WDR	Support WDR (Wide Dynamic Range)	
Lens mount	M12 lens mount support	
M12 Lens	M127B0618WR2	EFL: 6mm, FOV (D/H/V): 68.5° / 57° / 34°
	M128B02820WM12R1	EFL: 2.8mm, FOV (D/H/V): 134° / 112° / 69.5°
Interface (Electrical)		
Interface	USB 3.0	
Supply voltage	USB 3.0 +5 VDC power source	
Current consumption	Approx. 390 mA at 5 VDC	
Interface (Mechanical)		
Dimensions	LI-OV10635-SER	L: 26 mm, W: 26 mm, H: 35 mm
	LI-TESTER-NV	L: 26 mm, W: 26 mm, H: 12 mm
Mass (two modules)	30 g	
Adjustment (Manual)		
Shutter	TBD	
Gain	TBD	
Register access function	Yes	
Adjustment (Auto)		
Shutter	Yes	
Gain	Yes	
Environmental		
Max. temperature (operation)	0 °C ~ 50 °C (32 °F~ 122 °F)	
Max. temperature (storage)	-20 °C ~ 80 °C (-4 °F~176 °F)	
Max. humidity (operation)	20 % ~ 80 %, relative, non-condensing	
Max. humidity (storage)	20 % ~ 80 %, relative, non-condensing	



Leopard Imaging Inc.

48820 Kato Road, Suite 100B, Fremont, CA 94538, USA
 Phone: +1-408-263-0988
 Fax: +1-408-217-1960
 Email: sales@leopardimaging.com
 Website: www.leopardimaging.com

Revision History

Revision	Description	Release Date
1.0	First Release	2. May. 2015
1.1	Update the Serializer board to LI-SERINT12V V1.0	28. Feb. 2020
1.2	Add BOM and 112H lens	4. Mar. 2020



Leopard Imaging Inc.

48820 Kato Road, Suite 100B, Fremont, CA 94538, USA
Phone: +1-408-263-0988
Fax: +1-408-217-1960
Email: sales@leopardimaging.com
Website: www.leopardimaging.com