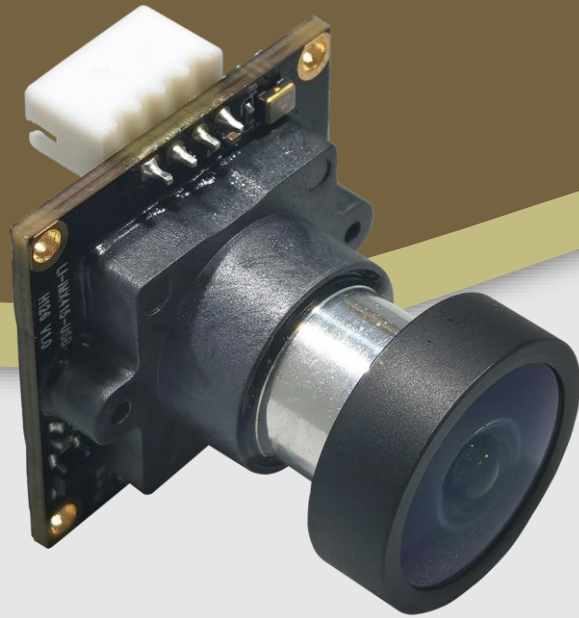




LI-IMX415-USB-126H



Address:

48820 Kato Road
Suite 100B
Fremont, CA 94538
USA



Phone:

+1 (408)263-0988

Fax:

+1 (408)217-1960



Sales:

sales@leopardimaging.com

Support:

support@leopardimaging.com

INTRODUCTION

The LI-IMX415-USB-126H is a USB camera with Sony 8.4MP STARVIS back-illuminated CMOS sensor IMX415. This camera outputs MJPEG and YUY2 data.

KEY FEATURES

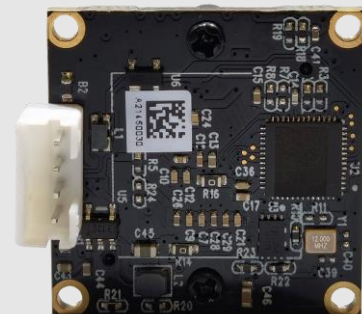
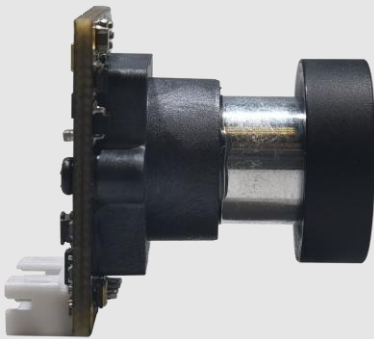
Sensor	Sony Diagonal 6.43 mm (Type 1/2.8) CMOS Image Sensor IMX415
Optical Format	1/2.8"
Resolution	3864 (H) x 2176 (V) (active pixels)
Pixel Size	1.45 x 1.45 μm
Output Format	MJPEG and YUY2
Color / Mono	Color
Interface	USB 2.0
Connector Part#	PH2.0-4A
Power Consumption	206 mA @ 5 VDC
Operating Temp	TBD
Storage Temp	TBD
Weight	~ 12 g
Part#	LI-IMX415-USB-126H

APPLICATIONS

- Robotics Cameras
- Industrial Cameras

LENS SPECIFICATIONS

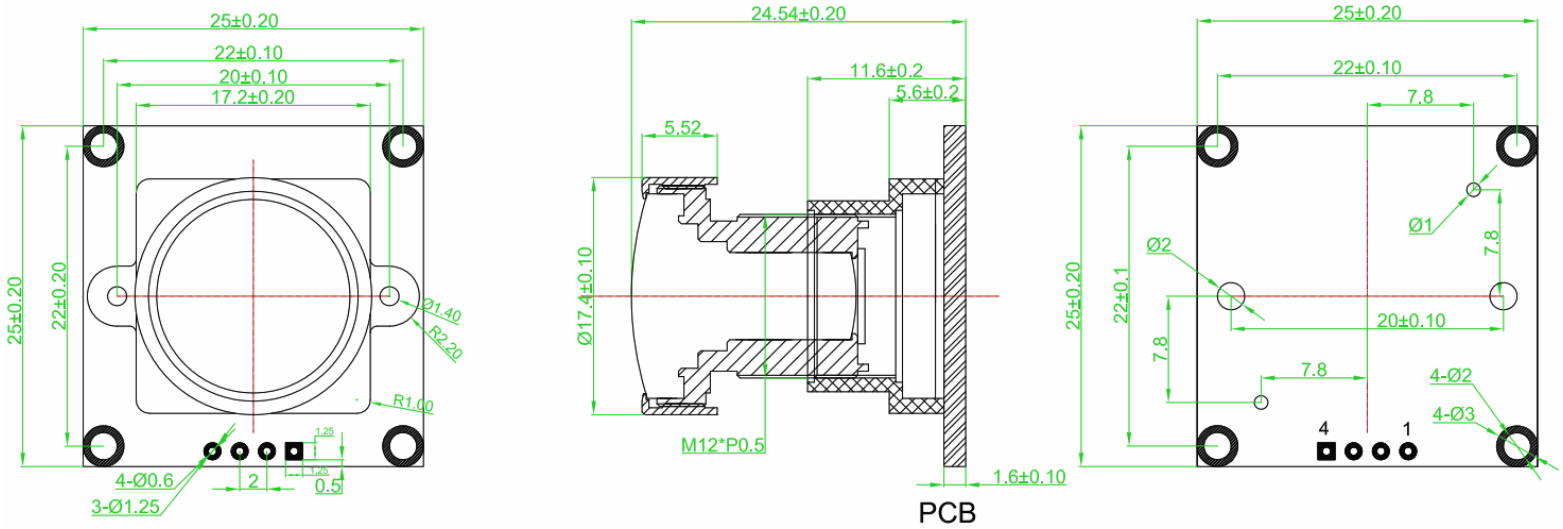
Focusing Range	80 cm to Infinity
Focal Length	3.0 mm
Aperture, F/#	2.0
Field of View (FOV)	126° horizontal
TV Distortion	< -50%
Lens Mount	M12 x P0.5



SPECIFICATION

Video Resolution, Format and Frame Rate	1920 x 1080	MJPEG @ 25 fps (Default)	640 x 480	YUY2 @ 25fps (Default)	
	2560 x 1440	MJPEG @ 25fps	640 x 360	YUY2 @ 25 fps	
	1600 x 896	MJPEG @ 25fps	352 x 288	YUY2 @ 25 fps	
	1280 x 720	MJPEG @ 25fps	320 x 240	YUY2 @ 25 fps	
	1024 x 768	MJPEG @ 25fps	176 x 144	YUY2 @ 25 fps	
	1024 x 576	MJPEG @ 25fps	160 x 120	YUY2 @ 25 fps	
	960 x 544	MJPEG @ 25fps	800 x 600	YUY2 @ 20 fps	
	864 x 480	MJPEG @ 25fps	1280 x 720	YUY2 @ 10 fps	
	848 x 480	MJPEG @ 25fps	1024 x 768	YUY2 @ 10 fps	
	800 x 600	MJPEG @ 25fps	1024 x 576	YUY2 @ 10 fps	
	800 x 448	MJPEG @ 25fps	960 x 544	YUY2 @ 10 fps	
	640 x 360	MJPEG @ 25fps	864 x 480	YUY2 @ 10 fps	
	640 x 480	MJPEG @ 25fps	848 x 480	YUY2 @ 10 fps	
	440 x 440	MJPEG @ 25fps	800 x 448	YUY2 @ 10 fps	
	352 x 288	MJPEG @ 25fps	1920 x 1080	YUY2 @ 5 fps	
	320 x 240	MJPEG @ 25fps	1600 x 896	YUY2 @ 5 fps	
	176 x 144	MJPEG @ 25fps	3840 x 2160	YUY2 @ 1 fps	
	160 x 120	MJPEG @ 25fps	2560 x 1440	YUY2 @ 1 fps	
	3840 x 2160	MJPEG @ 18fps			
	Adjustment	The following can be adjusted manually:			
		● Brightness	● Gamma		
		● Contrast	● White Balance (Default: Auto)		
		● Hue	● Backlight Comp		
		● Saturation	● Gain		
		● Sharpness			

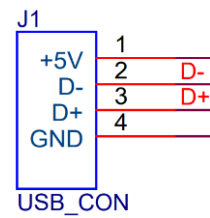
DIMENSIONS (Without Connector)



Unit: mm

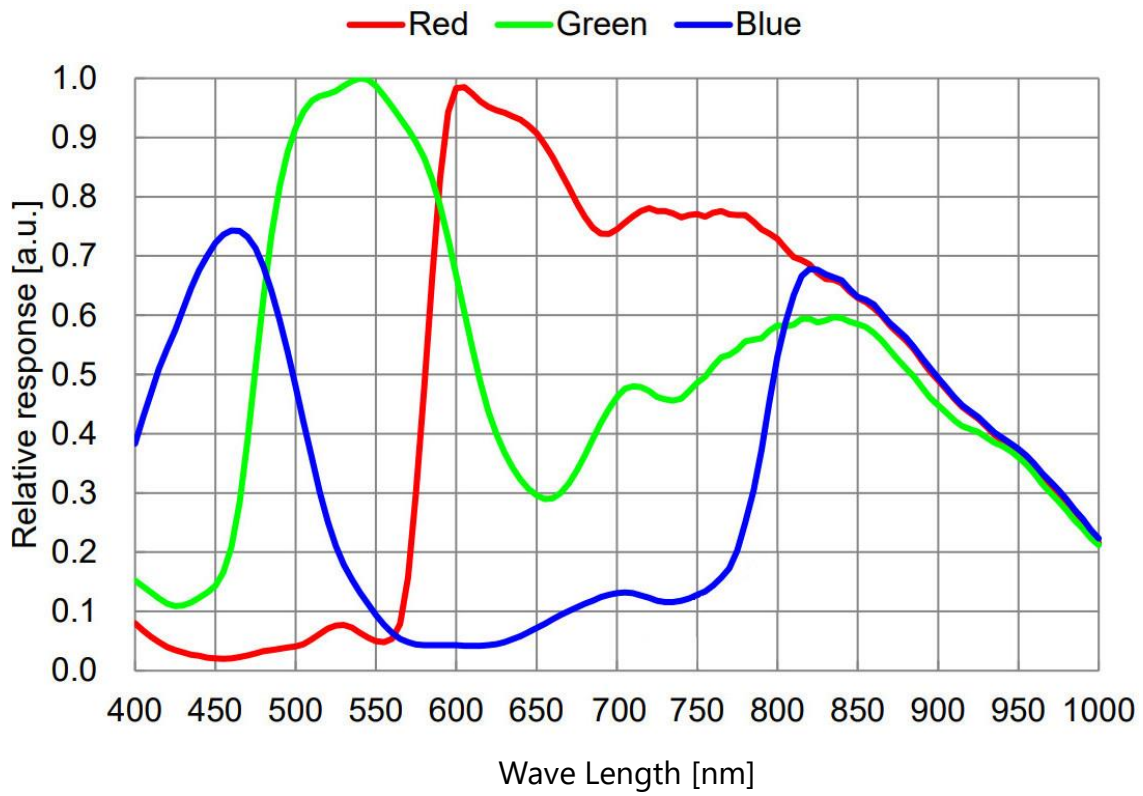
INTERFACE J1

Pin No.	Name
1	USB_5V
2	USB_D-
3	USB_D+
4	GND



IMX415 Sensor Specifications

SPECTRAL SENSITIVITY CHARACTERISTICS



● REVISION HISTORY

Revision	Description	Release Date
1.0	First release.	10 Dec 2021
1.1	Updated product images.	12 Jan 2022

48820 Kato Rd, Suite 100B, Fremont, CA 94538, USA
Phone: +1-408-263-0988
Fax: +1-408-217-1960
Email: sales@leopardimaging.com
Website: www.leopardimaging.com

