



LEOPARD
IMAGING

LI-IMX900C-GM2B-078H



Address:

910 Auburn Ct
Fremont, CA 94538
USA



Phone:

+1 (408)263-0988

Fax:

+1 (408)217-1960



Sales:

sales@leopardimaging.com

Support:

support@leopardimaging.com

INTRODUCTION

The LI-IMX900C-GM2B-078H is a high resolution color GMSL2 camera which features a global shutter. It is equipped with Sony diagonal 5.81 mm (Type 1/3.1) Pregius CMOS image color sensor IMX900 and ADI GMSL2 serializer MAX96717G. This camera outputs RAW image data.

KEY FEATURES

Maximum Frame Rate	8-bit: 121 fps @ All-pixel scan mode 10-bit: 113.4 fps @ All-pixel scan mode 12-bit: 70.6 fps @ All-pixel scan mode
Sensor	Sony Diagonal 5.81 mm Pregius Sensor IMX900
Optical Format	1/3.1"
Shutter Type	Global shutter
Pixel Size	2.25 × 2.25 μm
Color / Mono	Color
Output Format	8-bit / 10-bit / 12-bit RAW data
Resolution	2064 (H) × 1552 (V) (active pixels)
Serializer	ADI MAX96717G
Connector	FAKRA Z TYPE
Operating Temp	-30°C ~ +75°C
Storage Temp	-30°C ~ +75°C
Power Supply Range	9 ~ 19 VDC
Power Consumption	60 mA @ 12 VDC (30 fps @ 2064 × 1552)
Ingress Protection	No waterproof
Weight	~56 g

APPLICATIONS

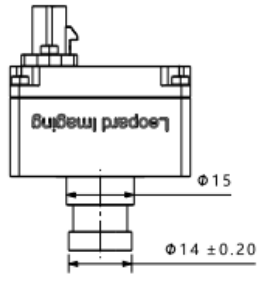
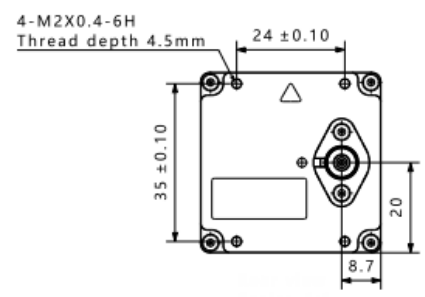
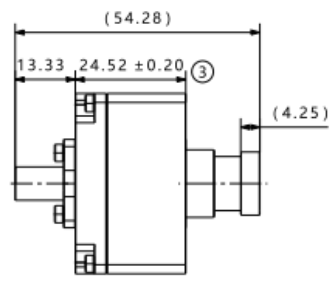
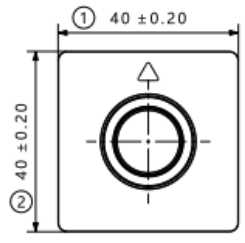
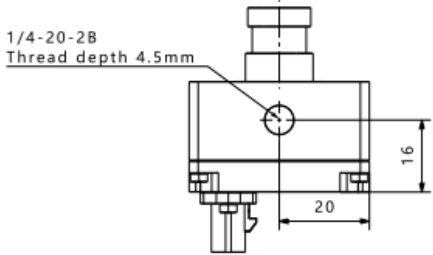
- FA camera
- Code reading camera
- Embedded vision systems

LENS SPECIFICATIONS

Focal Length	3.6 mm
Aperture, F/#	2.0 ± 5%
Field of View (FOV)	78° horizontal
TV Distortion	-10 %
Relative Illumination	> 78 %
IR Filter	650 nm IR cut Filter
Lens Mount	M12 x P0.5



DIMENSIONS

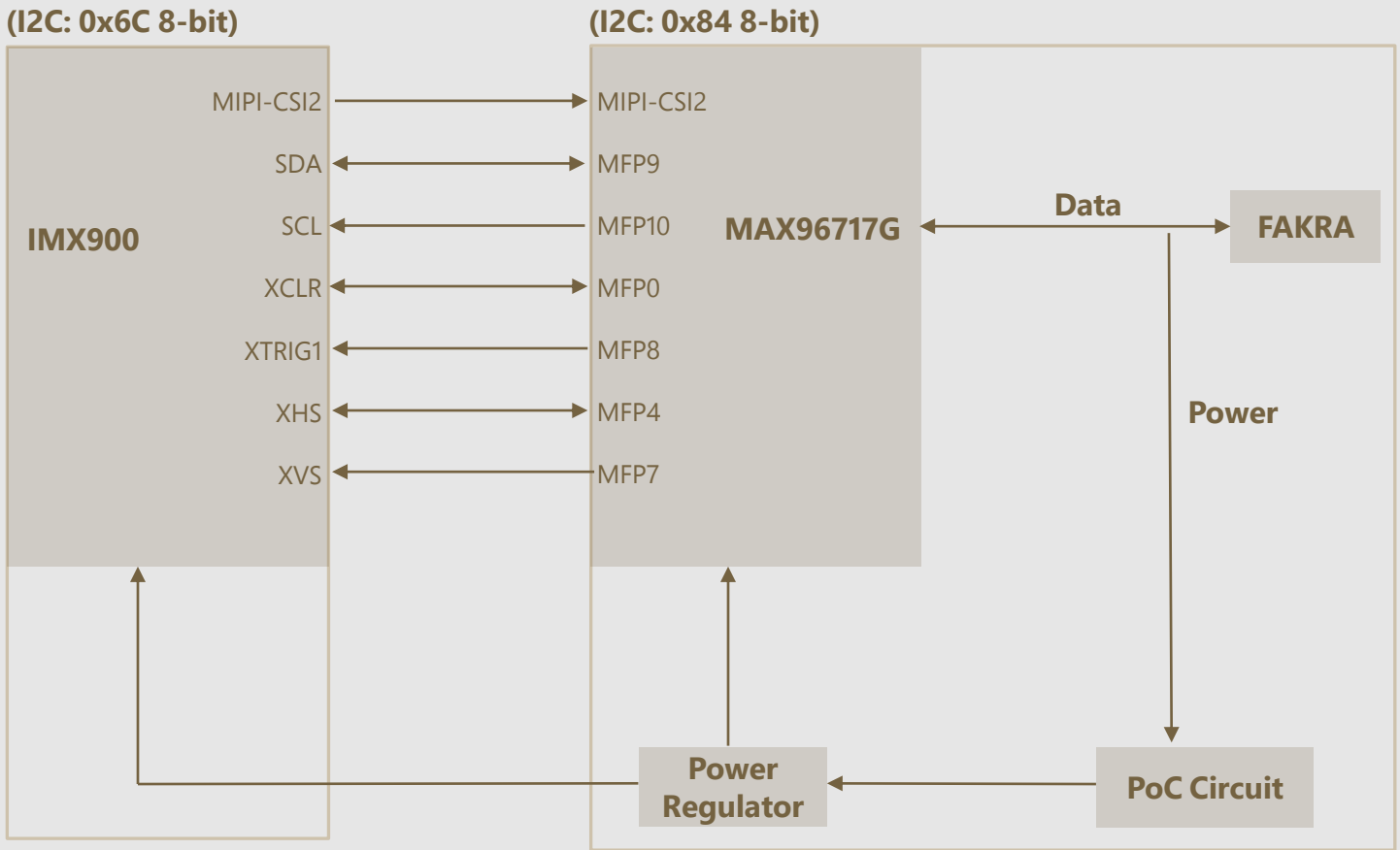


NOTE:

- ⊗ marked are important sizes.
- Tolerances for others unmarked refer to the tolerance table.
- Unit: mm

TOLERANCE TABLE					
LENGTH TOLERANCE		CHAMFER TOLERANCE		ANGLE TOLERANCE	
Size X	Tolerance	Size X	Tolerance	Size X	Tolerance
0.5 < X ≤ 3	±0.1	0.5 < X ≤ 3	±0.2	X ≤ 10	±1°
3 < X ≤ 6	±0.1	3 < X ≤ 6	±0.5	10 < X ≤ 50	±30'
6 < X ≤ 30	±0.2	6 < X ≤ 30	±1	50 < X ≤ 120	±20'
30 < X ≤ 120	±0.3	X > 30	±2	120 < X ≤ 400	±10'
120 < X ≤ 400	±0.5			X > 400	±5'
400 < X ≤ 1000	±0.8				
X > 1000	±1.2				

SYSTEM BLOCK DIAGRAM



IMAGING ORIENTATION



● REVISION HISTORY

Revision	Description	Release Date
1.0	First release.	09 Jun 2026

910 Auburn Ct, Fremont, CA 94538, USA

Phone: +1-408-263-0988

Fax: +1-408-217-1960

Email: sales@leopardimaging.com

Website: www.leopardimaging.com

