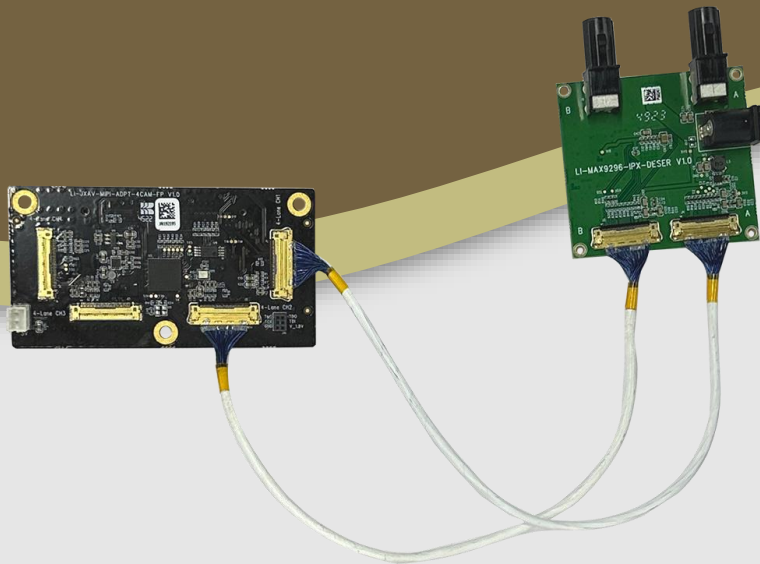




LEOPARD
IMAGING

LI-GMSL2-DESER-HOLOSCAN



Address:

910 Auburn Ct
Fremont, CA 94538
USA



Phone:

+1 (408)263-0988

Fax:

+1 (408)217-1960



Sales:

sales@leopardimaging.com

Support:

support@leopardimaging.com

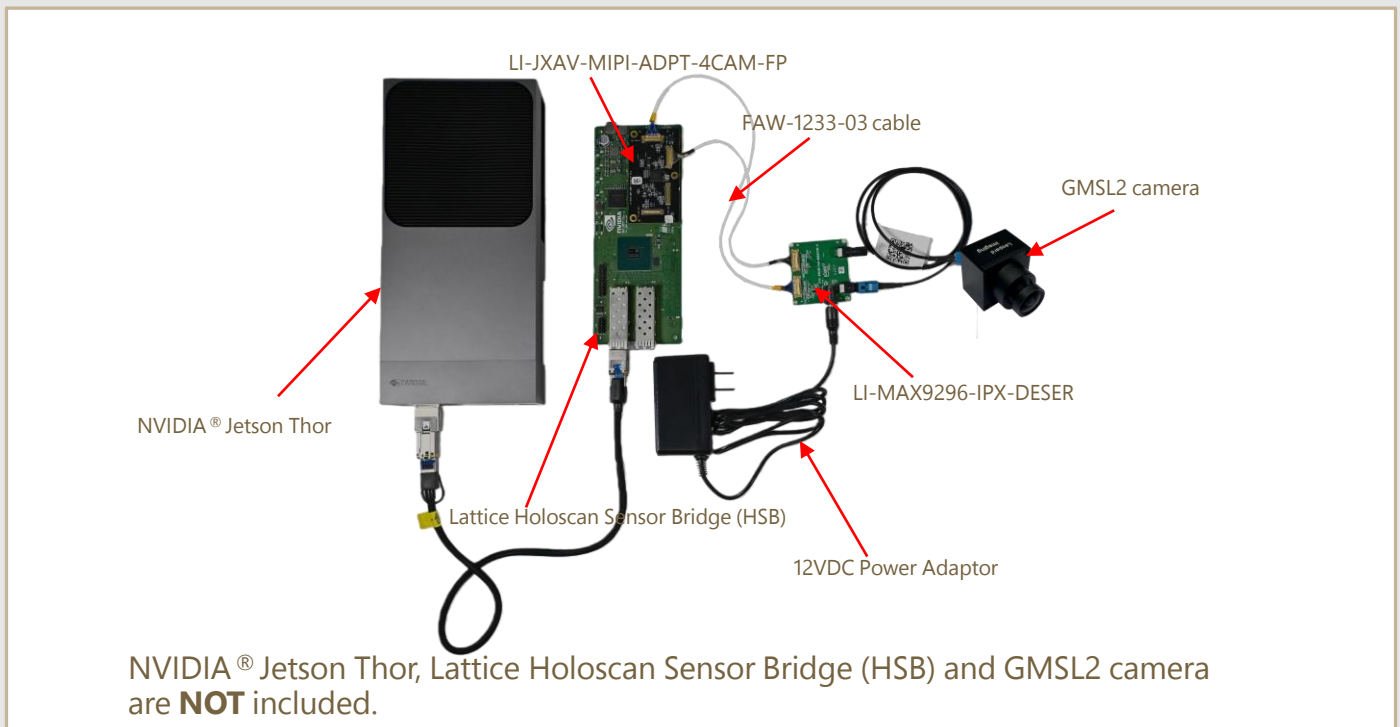
KEY FEATURES

- This is a GMSL2 DeSer kit for the Holoscan platform, supporting the NVIDIA® Jetson Thor, NVIDIA® Jetson AGX Orin™, and IGX Orin™ Developer Kits when mating with Lattice Holoscan Sensor Bridge (HSB).
- Supports 1x Leopard Imaging FAKRA camera
- De-serializer: ADI GMSL2 MAX9296
- Includes De-serializer to convert serial interface to MIPI interface
- Weight: ~ 42 g
- Part#: LI-GMSL2-DESER-HOLOSCAN

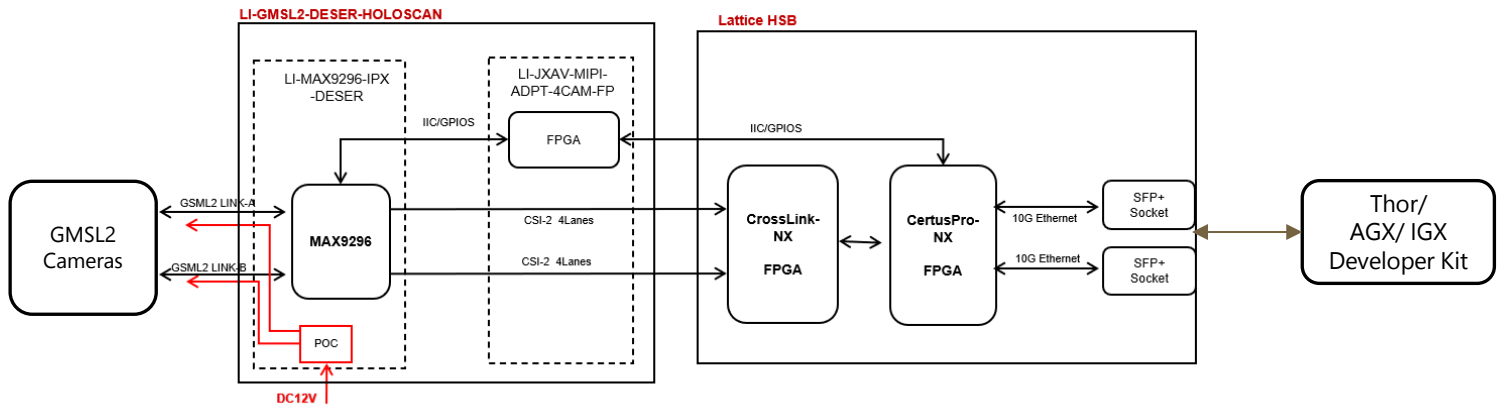
BOM

#	Items	QTY
1	LI-JXAV-MIPI-ADPT-4CAM-FP	1
2	LI-MAX9296-IPX-DESER	1
3	FAW-1233-03 cable	2
4	12 VDC Power Adaptor (only for testing)	1

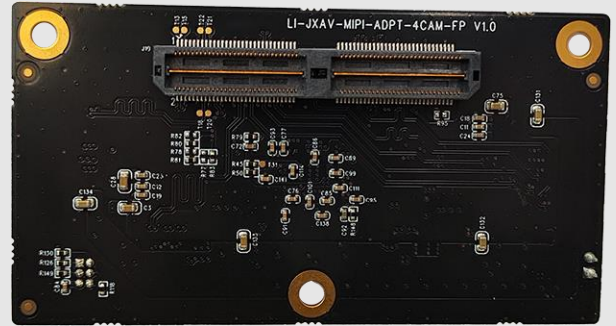
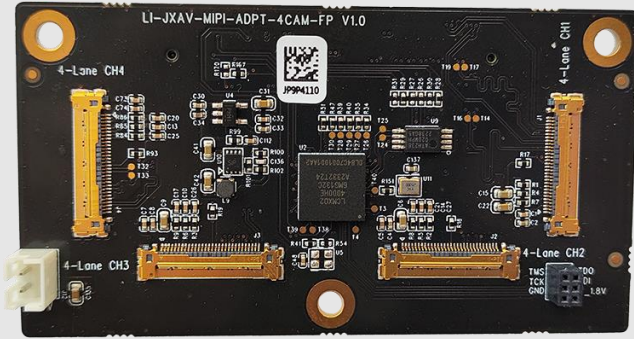
Typical camera connection



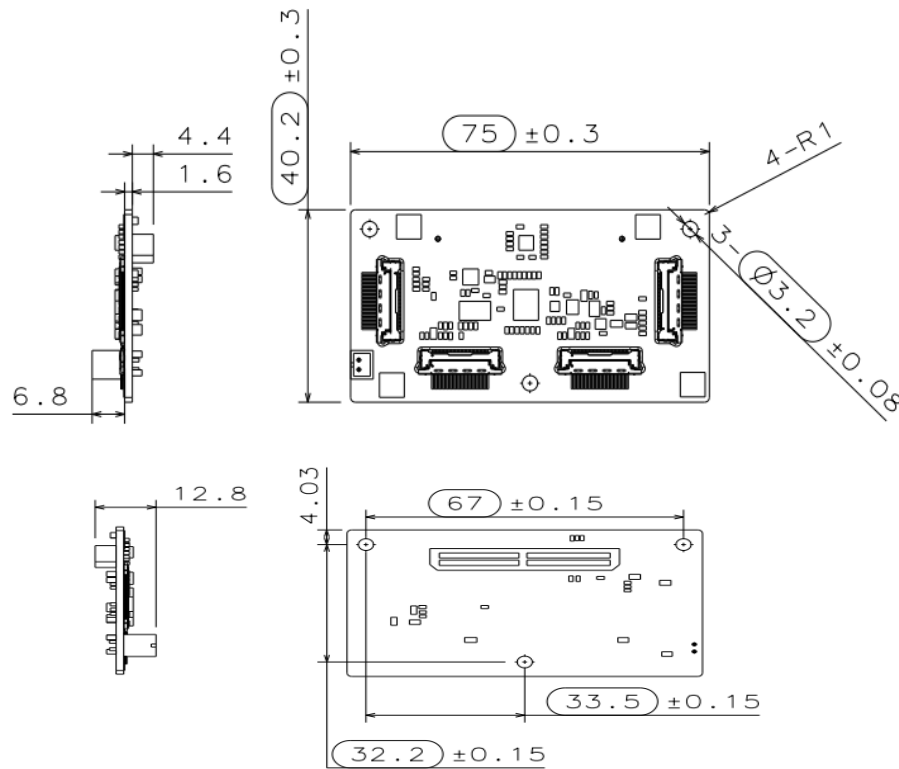
SYSTEM BLOCK DIAGRAM



Component #1 description: LI-JXAV-MIPI-ADPT-4CAM-FP



DIMENSIONS

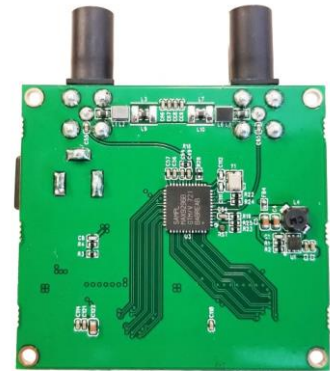
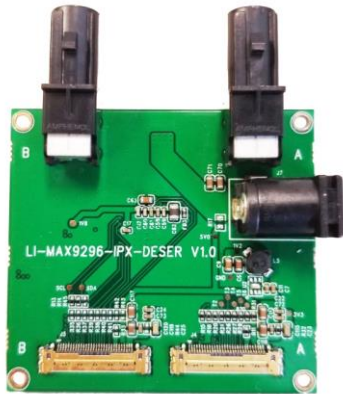


NOTE:

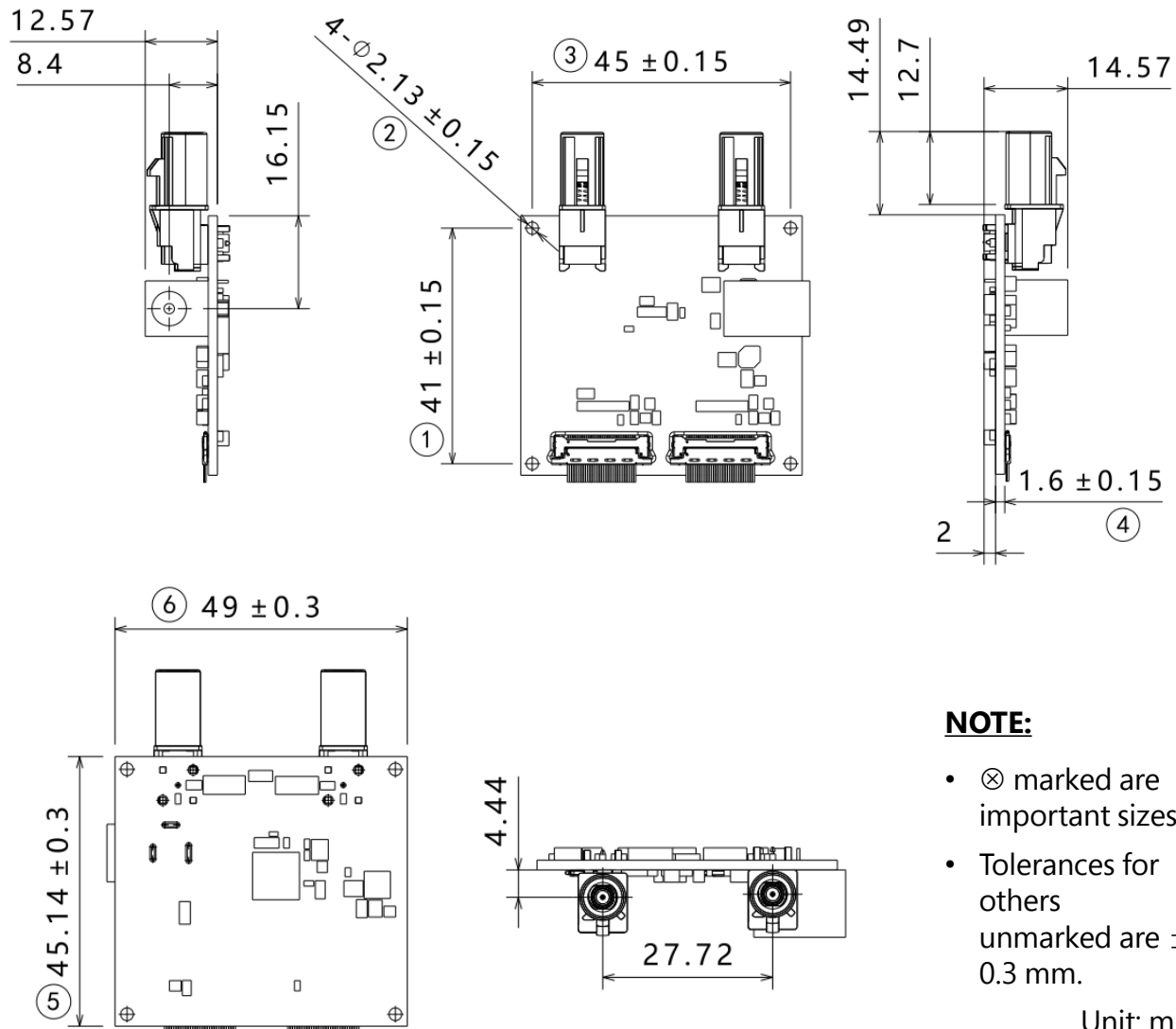
- \bigcirc marked are important sizes.
- Tolerances for the unmarked are ± 0.3 mm.

Unit: mm

Component #2 description: LI-MAX9296-IPX-DESER



DIMENSIONS



NOTE:

- ⊗ marked are important sizes.
- Tolerances for others unmarked are ± 0.3 mm.

Unit: mm

REVISION HISTORY

Revision	Description	Release Date
1.0	First release.	17 Nov 2025

910 Auburn Ct, Fremont, CA 94538, USA

Phone: +1-408-263-0988

Fax: +1-408-217-1960

Email: sales@leopardimaging.com

Website: www.leopardimaging.com

