



LEOPARD
IMAGING

LI-USB30-CSLINK-IPX-TESTER



Address:

910 Auburn Ct
Fremont, CA 94538
USA



Phone:

+1 (408)263-0988

Fax:

+1 (408)217-1960



Sales:

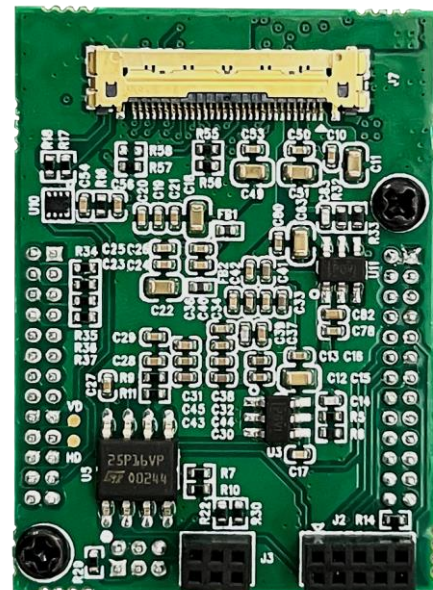
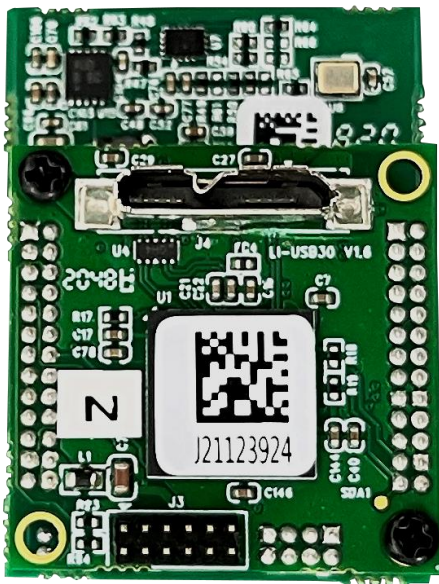
sales@leopardimaging.com

Support:

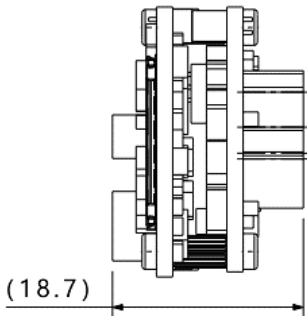
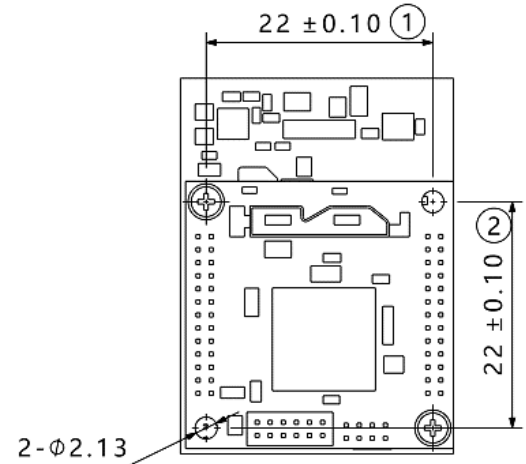
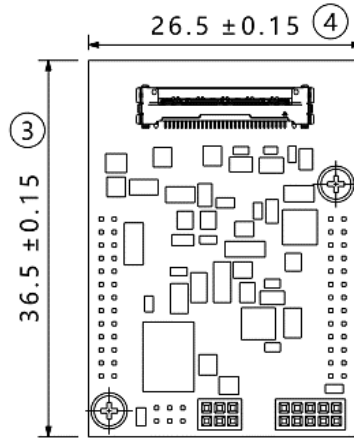
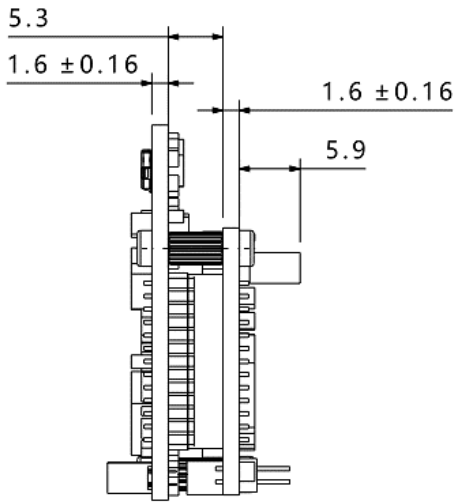
support@leopardimaging.com

TECHNICAL FEATURES

- Includes two boards: LI-USB30 V1.6 + LI-CSLINK-IPX-TESTER V1.1
 - Includes FPGA for MIPI to Parallel interface conversion
 - 1 x USB30 Micro-B interface
 - 1 x 4-lane MIPI CSI2 interface for camera
- MIPI connector part#: 20525-030E-02
- Weight: ~ 10 g
 - Part#: **LI-USB30-CSLINK-IPX-TESTER**



DIMENSIONS



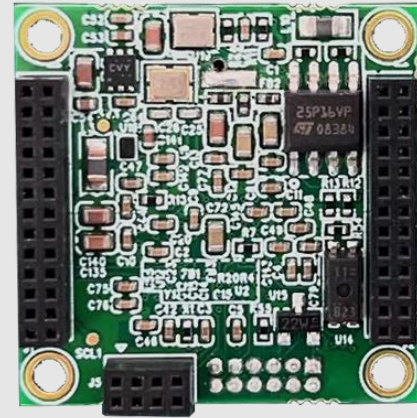
TOLERANCE TABLE					
LENGTH TOLERANCE		CHAMFER TOLERANCE		ANGLE TOLERANCE	
Size X	Tolerance	Size X	Tolerance	Size X	Tolerance
0.5 < X ≤ 3	±0.1	0.5 < X ≤ 3	±0.2	X ≤ 10	±1°
3 < X ≤ 6	±0.1	3 < X ≤ 6	±0.5	10 < X ≤ 50	±30'
6 < X ≤ 30	±0.2	6 < X ≤ 30	±1	50 < X ≤ 120	±20'
30 < X ≤ 120	±0.3	X > 30	±2	120 < X ≤ 400	±10'
120 < X ≤ 400	±0.5			X > 400	±5°
400 < X ≤ 1000	±0.8				
X > 1000	±1.2				

NOTE:

- ⊗ marked are important sizes.
- Tolerances for the unmarked – refer to the Tolerance table.
- All materials are compliant with RoHS requirements.

Unit: mm

LI-USB30

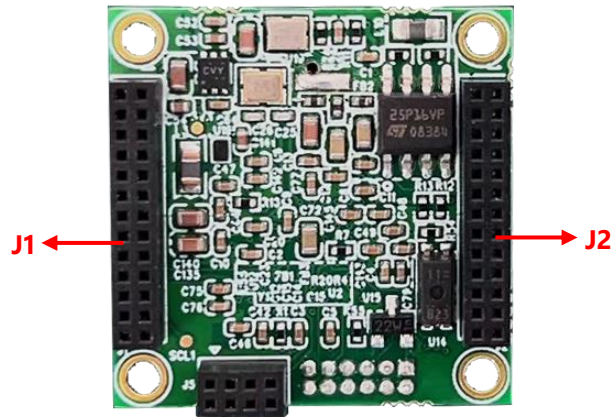


INTERFACES

Interface J1 and J2

- Number of Positions: 26
- Number of Rows: 2
- Pitch: 1.27 mm

Interface	To Interface on LI-CSLINK-IPX-TESTER
J1	J4
J2	J5

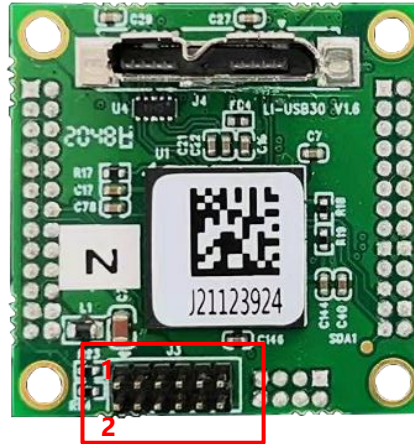


LI-USB30

INTERFACES

Interface J3

- Number of Positions: 12
- Number of Rows: 2
- Pitch: 1.27 mm



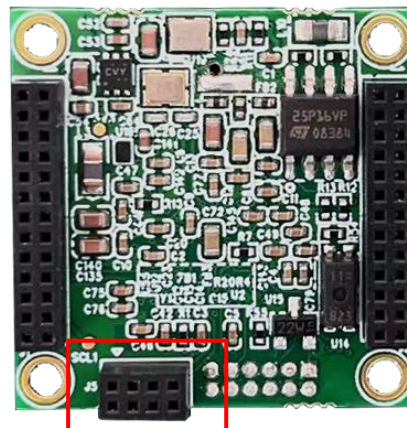
NOTE:

Pin5 is the reference ground of external trigger.

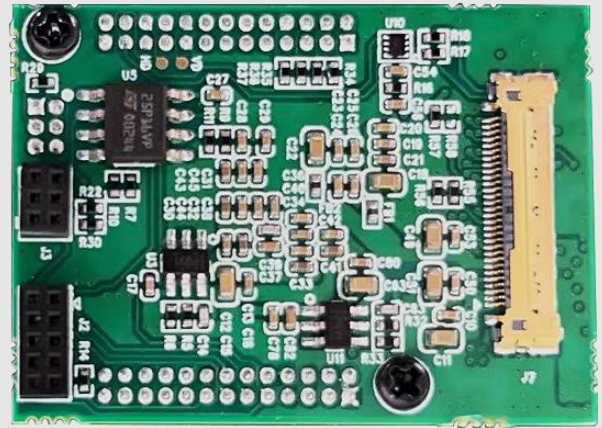
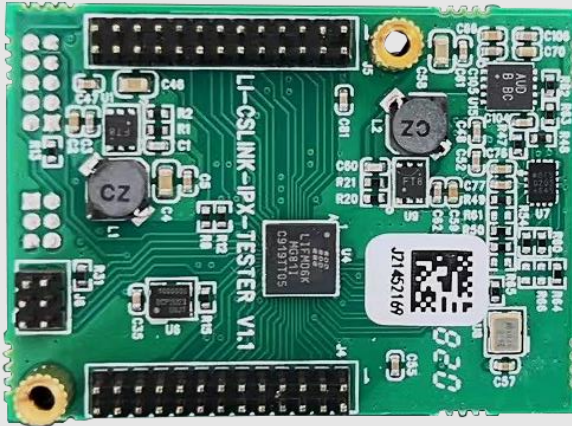
Pin	Definition
1	External Trig
2	NC
3	UART_TX
4	UART_RX
5	External Ground
6	Digital Ground
7	External + 5 VDC
8	Power Output + 3.3 VDC
9	GPIO25
10	GPIO60
11	GPIO26
12	GPIO27

Interface J5

- Part#: 20021311-00008T4LF
- Number of Positions: 8
- Number of Rows: 2
- Pitch: 1.27 mm
- To interface on LI-CSLINK-IPX-TESTER: J6



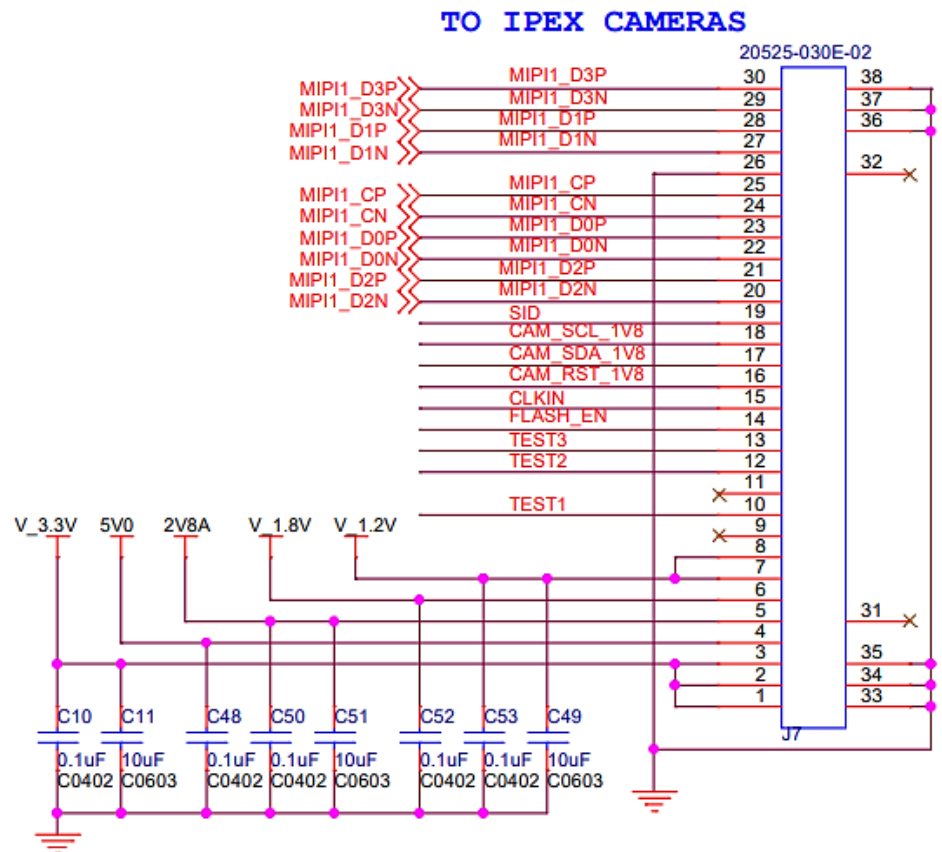
LI-CSLINK-IPX-TESTER



INTERFACES

Interface J7 (To Camera)

- Part#: 20525-030E-02
- Number of Positions: 30
- Pitch: 0.4 mm
- Mating I-PEX Cable: FAW-1233-03 (300 mm)



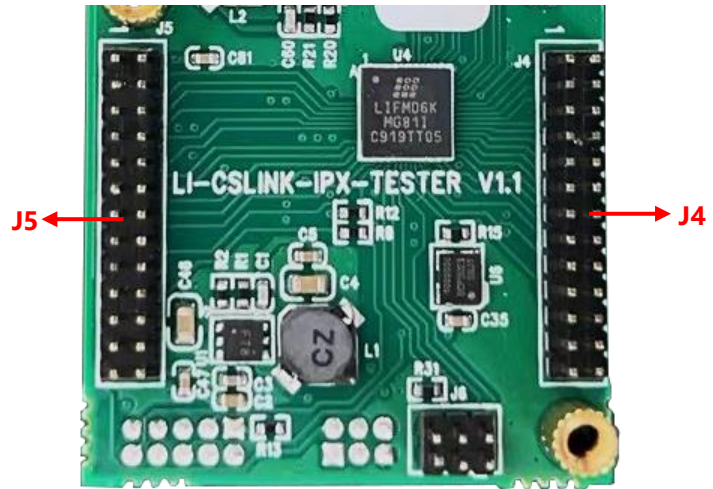
LI-CSLINK-IPX-TESTER

INTERFACES

Interface J4 & J5

- Number of Rows: 2
- Number of Positions: 26

Interface	To Interface on LI-USB30
J4	J1
J5	J2



Interface J6

- Part#: GRPB032VWVN-RC
- Number of Positions: 6
- Number of Rows: 2
- Pitch: 1.27 mm
- To interface on LI-USB30: J5

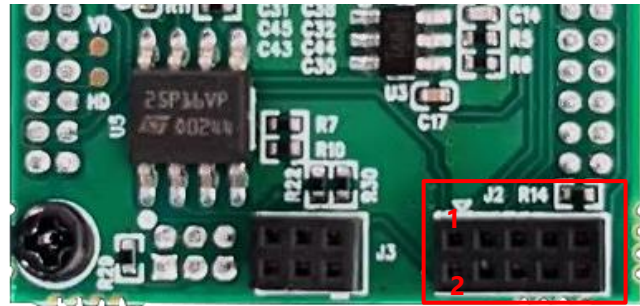


LI-CSLINK-IPX-TESTER

INTERFACES

Interface J2 (Program Header)

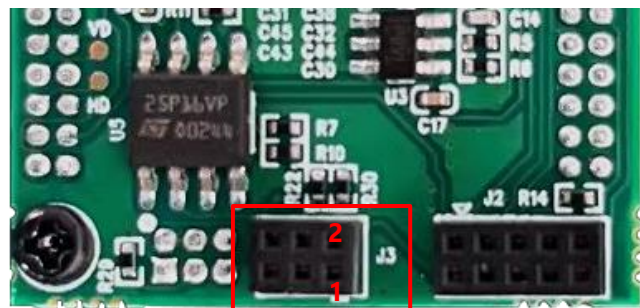
- Part#: 20021311-00010T4LF
- Number of Positions: 10
- Number of Rows: 2
- Pitch: 1.27 mm



Pin	Definition	Pin	Definition
1	3.3V	2	SCK_D19
3	SDA_D24	4	SDO_D18
5	SCL_D26	6	SPI_CS_N
7	Ground	8	SDI_D20
9	Ground	10	CRESET_B

Interface J3 (Debug Header)

- Part#: 20021311-00006T4LF
- Number of Positions: 6
- Number of Rows: 2
- Pitch: 1.27 mm



Pin	Definition	Pin	Definition
1	3.3V	2	DBG1_D16
3	DBG4_D30	4	DBG2_D17
5	Ground	6	DBG3_D28

REVISION HISTORY

Revision	Description	Release date
0.1	Initial draft.	21 Mar 2022
0.2	1. Added 2D dimensions and weight. 2. Updated interfaces. 3. Deleted PCBA sizes.	04 Feb 2024

910 Auburn Ct, Fremont, CA 94538, USA

Phone: +1 (408)263-0988

Fax: +1 (408)217-1960

Email: sales@leopardimaging.com

Website: www.leopardimaging.com

