



**LEOPARD**  
IMAGING

# LI-EV2S05M-MIPI-113H



**Address:**

910 Auburn Ct  
Fremont, CA 94538  
USA



**Phone:**

+1 (408)263-0988

**Fax:**

+1 (408)217-1960



**Sales:**

[sales@leopardimaging.com](mailto:sales@leopardimaging.com)

**Support:**

[support@leopardimaging.com](mailto:support@leopardimaging.com)

## INTRODUCTION

The LI-EV2S05M-MIPI-113H is a MIPI CSI-2 camera with Teledyne 5.0MP sensor EV2S05M which is high sensitivity with low power consumption. This camera outputs 2560 x 1936 RAW data.

## SPECIFICATIONS

Sensor	Teledyne CMOS Image Sensor EV2S05M
Optical Format	1/1.8"
Resolution	2560 (H) x 1936 (V)
Pixel Size	2.8 x 2.8 $\mu\text{m}$
Color / Mono	Color sensor
Shutter	Global shutter
Output Format	RAW data
ISP	Not included
Color / Mono	Color sensor
Interface	4-lane MIPI CSI-2
Connector	20525-030E-02
Power Consumption	900 mW
Operating Temp	-40°C ~ +85°C
Storage Temp	-40°C ~ +85°C
Weight	~ 20 g
Part#	LI-EV2S05M-MIPI-113H

## APPLICATIONS

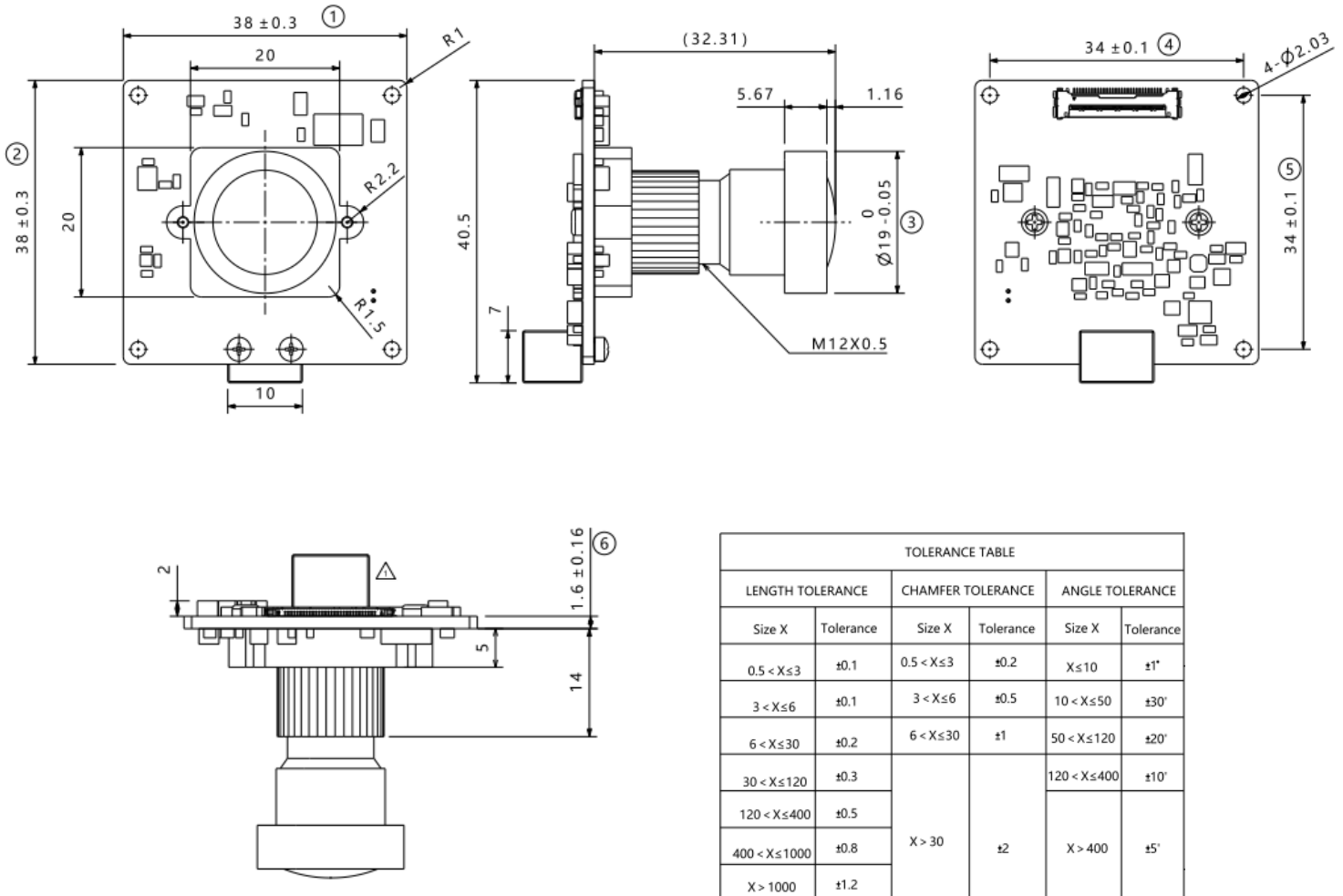
- Embedded Vision Systems
- IoT Edge Devices
- Virtual Reality / Augmented Reality

## LENS SPECIFICATIONS

Focal Length	3.939 mm
Aperture, F/#	2.20 $\pm$ 5%
Field of View (FOV)	113° horizontal
	83° vertical
	144° diagonal
TTL	31.51 mm
IR Filter	650 nm IR cut filter
Lens Mount	M12 x P0.5



## DIMENSIONS



TOLERANCE TABLE					
LENGTH TOLERANCE		CHAMFER TOLERANCE		ANGLE TOLERANCE	
Size X	Tolerance	Size X	Tolerance	Size X	Tolerance
$0.5 < X \leq 3$	$\pm 0.1$	$0.5 < X \leq 3$	$\pm 0.2$	$X \leq 10$	$\pm 1'$
$3 < X \leq 6$	$\pm 0.1$	$3 < X \leq 6$	$\pm 0.5$	$10 < X \leq 50$	$\pm 30'$
$6 < X \leq 30$	$\pm 0.2$	$6 < X \leq 30$	$\pm 1$	$50 < X \leq 120$	$\pm 20'$
$30 < X \leq 120$	$\pm 0.3$	X > 30	$\pm 2$	$120 < X \leq 400$	$\pm 10'$
$120 < X \leq 400$	$\pm 0.5$			X > 400	$\pm 5'$
$400 < X \leq 1000$	$\pm 0.8$				
X > 1000	$\pm 1.2$				

### NOTE:

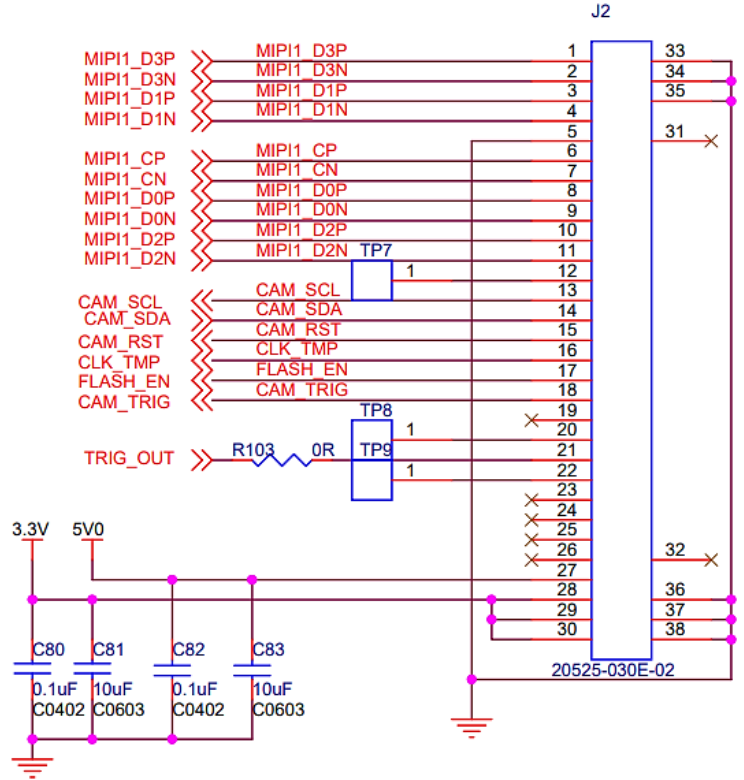
- $\otimes$  marked are important sizes.
- Tolerances for the unmarked – refer to the Tolerance table.
- All materials are compliant with RoHS requirements.

Unit: mm

# INTERFACE J4

- Connector Part#: 20525-030E-02
- Number of positions: 30
- Pitch: 0.4 mm
- Mating I-PEX cable: FAW1233-03 (300 mm)
- Sensor input clock: On board 27MHz
- Sensor I2C address: 0x10 (W) / 0x11 (R)
- External power supply: 3.3V, 5V
- 3V3A, 1.8V, 1.2V are generated from board

## I-PEX 0.4mm pitch connector



## USB3.0 CAMERA KIT

### LI-USB30-CSLINK-IPX-TESTER



LI-EV2S05M-MIPI-113H can be connected to LI-USB30-CSLINK-IPX-TESTER as a USB 3.0 camera.

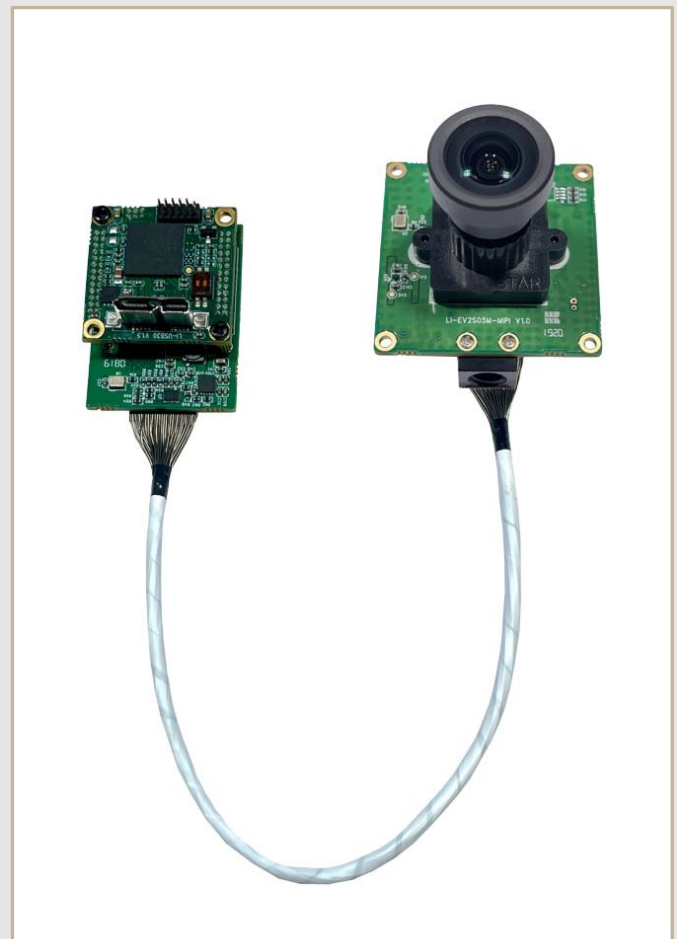
Part#: **LI-USB30-EV2S05M-MIPI-113H**

### SPECIFICATIONS

- USB 3.0 Super Speed support
- RAW data output without compression
- UVC compliant
- Allows customization
- Supports M12 lens
- Weight: ~ 35 g
- Resolution: 2560 x 1936 @ 6 fps (limited by USB 3.0 speed)
- USB +5 VDC powered device
- Compatible with Windows, Linux OS and other OS which have UVC drivers

### SDK SUPPORTED

- Camera Tool Source Code in C#
- Capture & Display
- Register Access Function
- RAW to BMP Conversion
- Save File as BMP & RAW Format
- Color Matrix



## ● REVISION HISTORY

Revision	Description	Release Date
1.0	First release.	13 Jan 2021
1.1	Added tripod adapter.	05 Feb 2021
1.2	Updated 2D dimensions and interface.	10 Dec 2023

910 Auburn Ct, Fremont, CA 94538, USA

Phone: +1-408-263-0988

Fax: +1-408-217-1960

Email: [sales@leopardimaging.com](mailto:sales@leopardimaging.com)

Website: [www.leopardimaging.com](http://www.leopardimaging.com)

