



LI-AR0239-GW5400-GMSL2-xxxH Data Sheet

Key Features

- ON SEMI 2.3MP CMOS RGB-IR Image Sensor AR0239
- Optical format: 1/2.7"
- Resolution: 1920 (H) x 1080 (V)
- Pixel size: 3.0 x 3.0 μ m
- YUV output without compression
- Includes GEO Semi GW5400 ISP
- Support HDR
- Lens: FOV H 137° / 200°
- Built-in 650nm+940nm Dual band filter
- GMSL2 Serializer
- Connector: FAKRA Z TYPE
- Water proof: IPX9K
- Operating Temp: -30 ~ 85 °C
- Storage Temp: -40 ~ 105 °C
- Weight: ~ 50 g
- Part#:

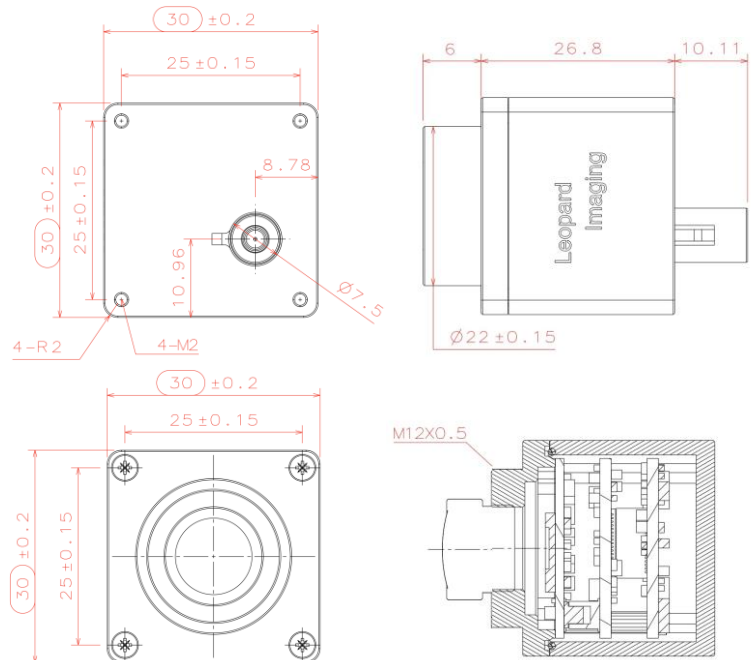
LI-AR0239-GW5400-GMSL2-xxxH



Application

- Automotive ADAS
- 1080p video applications
- ADAS + Viewing Fusion

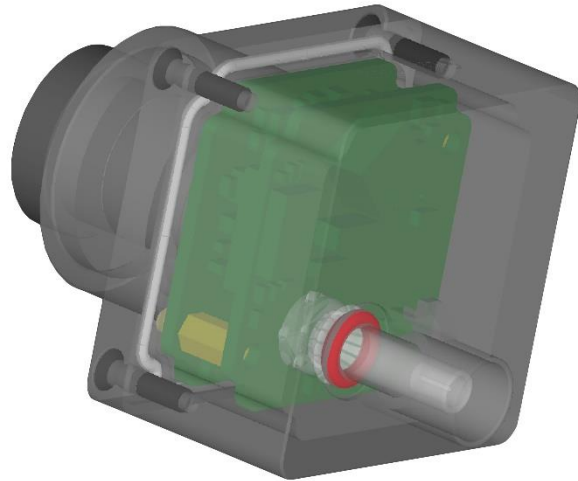
Dimensions



Water Proof

- Metal Housing
- Water-proof M12 lens
- Sealed Gasket (White)
- Sealed O-ring (Red)

Note: The lens must be glued for water-proof.



Cable Connector

- Housing Connector- FAKRA Z Type
- Cable length: 3 meters
Support single Coax Cable transmit up to 12 meters
- Cable Part#: FAK-SMZSMZ-3M
- FAKRA type connectors



Ordering Information

Part#: LI-AR0239-GW5400-GMSL2-xxxH

Note:

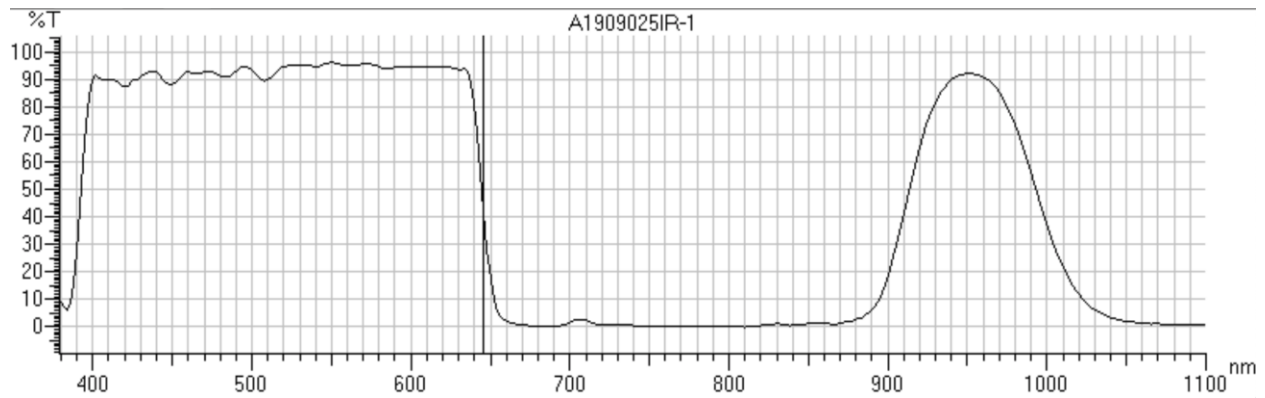
xxxH - 137H: FOV H 137°

xxxH - 200H: FOV H 200°

LI-AR0239-GW5400-GMSL2-137H	LI-AR0239-GW5400-GMSL2-200H
	
<p>Lens EFL: 2.666 mm F/#: 2.4 FOV(D): 168.14° FOV(H): 137.54° FOV(V): 71.58° Built-in 650nm + 940nm Dual band filter M12 Mount</p>	<p>Lens EFL: 1.34 mm +/- 5% F/#: 2.0 +/- 5% FOV(D): 200° FOV(H): 200° FOV(V): 125° Built-in 650nm + 940nm Dual band filter M12 Mount</p>



650nm + 940nm Dual band filter



Peak #	Start (nm)	Apex (nm)	End (nm)	Height (%T)	Area (%T*nm)	Valley (nm)	Valley (%T)
1	1100.00	1080.00	946.00	0.93	4677.65	946.00	93.33
2	946.00	858.00	842.00	0.26	3725.43	842.00	1.61
3	842.00	780.00	732.00	0.02	24.53	732.00	0.76
4	732.00	722.00	706.00	0.57	31.33	706.00	2.67
5	706.00	684.00	600.00	0.34	4220.24	600.00	95.33
6	600.00	574.00	560.00	93.01	3970.43	560.00	95.53
7	560.00	550.00	540.00	95.08	2097.31	540.00	95.63
8	540.00	506.00	494.00	90.45	4495.85	494.00	95.03
9	494.00	478.00	470.00	91.57	2418.99	470.00	92.93
10	470.00	448.00	436.00	87.92	3283.20	436.00	93.03

Image Sample



RGB mode



IR mode



910 Auburn Ct, Fremont, CA 94538, USA
 Phone: +1-408-263-0988
 Fax: +1-408-217-1960
 Email: sales@leopardimaging.com
 Website: www.leopardimaging.com

LI-GMSL2-FP-USB-BOX



LI-AR0239-GW5400-GMSL2 can connect to LI-GMSL2-FP-USB-BOX as a USB 3.0 camera. Part#: [LI-USB30-AR0239-GW5400-GMSL2-xxxH](#)

Key Features

- USB 3.0 Super Speed support
- YUV output without compression
- Support HDR
- Support RGB and IR mode
- UVC compliance
- Provide customization services
- 12 VDC Power Supply (Comes with camera)
- Weight: ~ 178 g
- Single Coax Cable transmit up to 12 meter PoC(Power over Cable)
- Support 1920 x 1080 @ 30 fps
- Power consumption: < 140 mA @ 12 VDC
- Support Windows, Linux OS and other OS which include UVC drivers



SDK Supported

- Camera Tool Source Code in C#
- Capture & Display



Revision History

Revision	Description	Release Date
1.0	First Release	22. Aug. 2019
1.1	Add 130H lens	21. Nov. 2019
1.2	Change ISP to GW5400	1. Sep. 2020
1.3	Change lens to 137H and USB3.0 Tester to FP version	30. Jan. 2021

