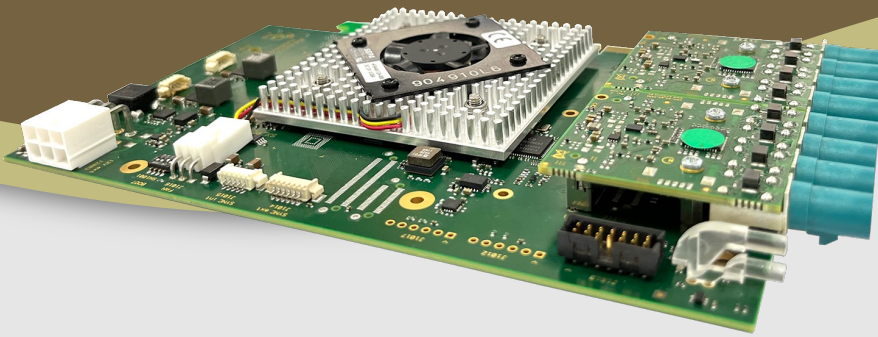




LI-PCIEFG-GMSL2



Address:

48820 Kato Road
Suite 100B
Fremont, CA 94538
USA



Phone:

+1 (408)263-0988

Fax:

+1 (408)217-1960



Sales:

sales@leopardimaging.com

Support:

support@leopardimaging.com

INTRODUCTION

The LI-PCIEFG-GMSL2 is the latest generation of video grabber and playback system which mainly consists of SX proFRAME 3.0 Base Board, SX proFRAME 3.0 Camera Adapter interfaces and Maxim MAX9296A deserializers. It can connect up to 8 cameras.

TECHNICAL FEATURES

| | |
|----------------------------|--|
| Camera Adapter Interfaces | <p>2 x SX proFRAME 3.0 Camera Adapter interfaces, each with:</p> <ul style="list-style-type: none"> • 4 x CSI-2 interfaces (4 lanes), each up to 10 Gbit/s, total 40 Gbit/s or 23 x LVDS data lanes, each up to 1.6 Gbit/s, total 36.8 Gbit/s • 4 x I2C interface (1MBaud) to de-/serializer chips • 1 x I2C interface to internal devices (EEPROM, PoC, ...) • 8 to 24 VDC supply for Power over Coax (PoC) • FSYNC trigger, interrupt, reference clock and other GPIO signals |
| DeSerializer | Maxim MAX9296A |
| FPGA | Xilinx Zynq UltraScale+ ZU4CG MPSoC (FBVB900) |
| Processing Subsystem (PS) | Dual-core ARM® Cortex™-A53 MPCore™ up to 1.3GHz |
| PCIe interface | PCIe X8 Gen3 (64 Gbit/s, ~51 Gbit/s netto) to backplane |
| Max Connected Camera QTY | 8 |
| Connector | FAKRA Z TYPE |
| Operating Temp | -20°C ~ +85°C |
| Weight | ~ 191 g |
| Size (With Camera Adapter) | 175.26 (L) x 106.68 (W) x 19.45 (D) mm |
| Part# | LI-PCIEFG-GMSL2 |

APPLICATIONS



Automotive

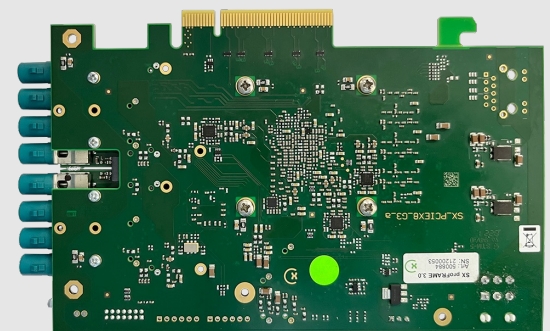
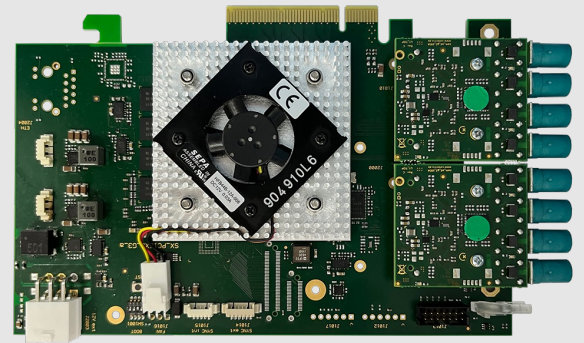


Medical



Industrial

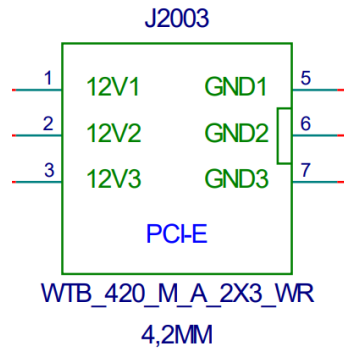
- Video data capture
- Video data replay
- Hardware in the Loop (HiL), e.g. for ADAS / AD ECU validation
- Realtime video processing



INTERFACE J2003 (12V EXT)

- Part#: 0455580003
- Number of Positions: 6
- Number of Rows: 2
- Pitch: 4.20 mm
- Pin Assignment:

| Pin No. | Name |
|---------|------|
| 1 | 12V1 |
| 2 | 12V2 |
| 3 | 12V3 |
| 5 | GND1 |
| 6 | GND2 |
| 7 | GND3 |



● REVISION HISTORY

| Revision | Description | Release Date |
|----------|----------------|--------------|
| 0.1 | Initial draft. | 17 Mar 2022 |

48820 Kato Rd, Suite 100B, Fremont, CA 94538, USA

Phone: +1-408-263-0988

Fax: +1-408-217-1960

Email: sales@leopardimaging.com

Website: www.leopardimaging.com

